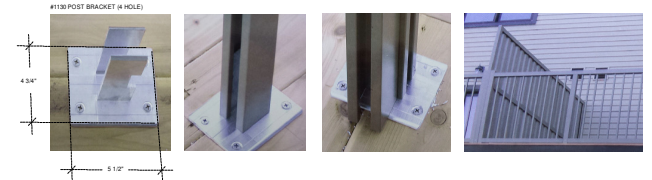
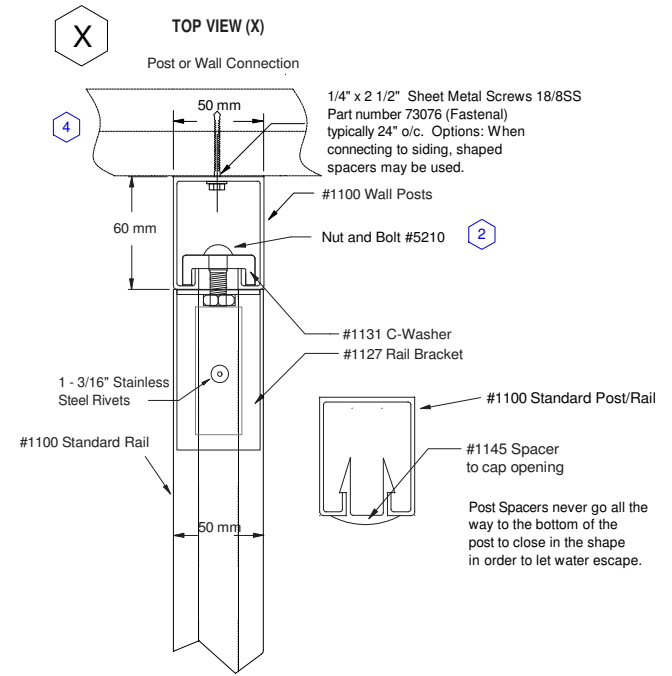
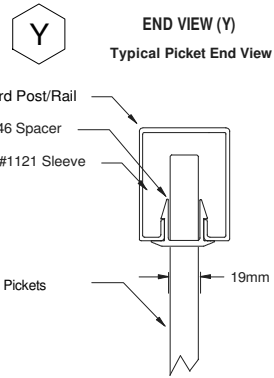
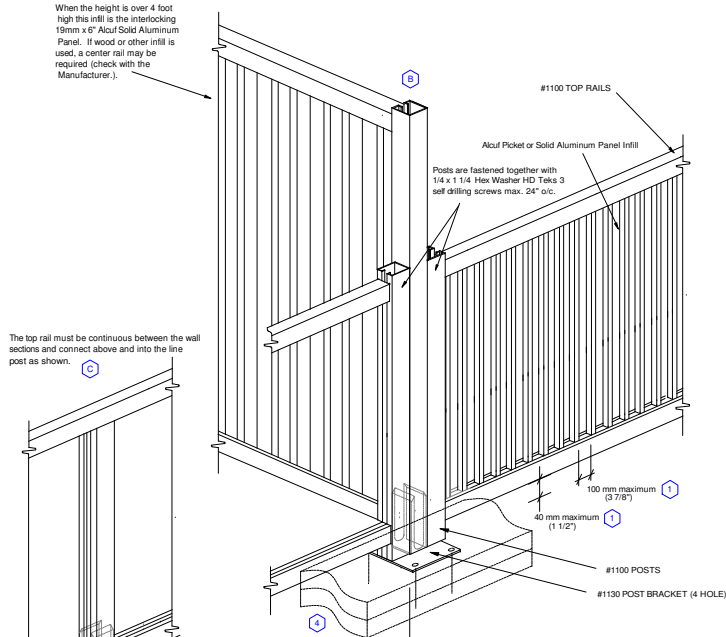
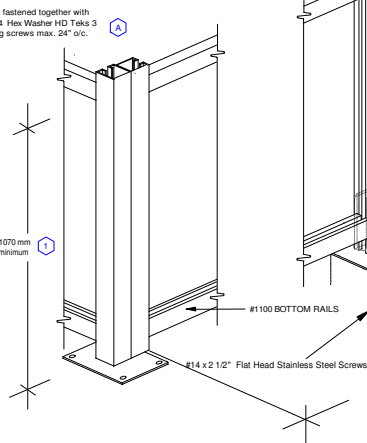
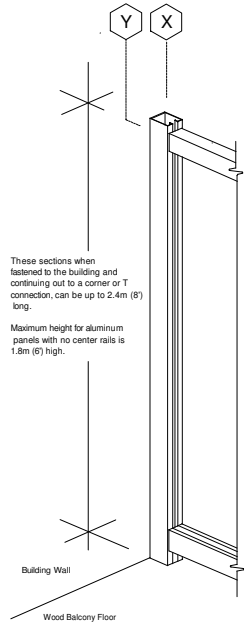


**DESIGN NOTES**

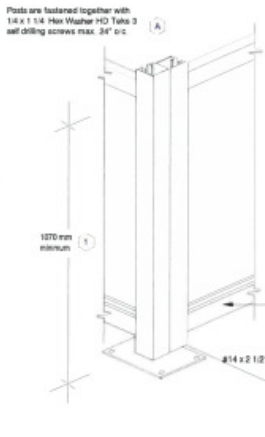
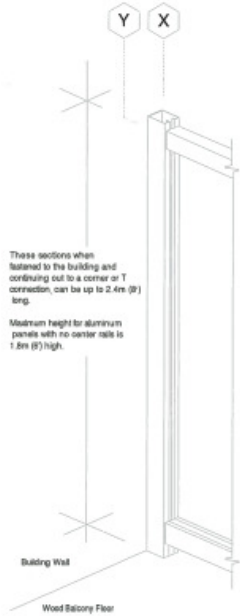
- Balcony Railing height, spacing under railing, and spacing between pickets are to be in accordance with the Ontario Building code and local ordinances.
- All bolts will be grade 5 or better.
- Specifications that mention brand names can be substituted for other brands of equivalent or better quality.
- Sufficient backing under post brackets and behind wall brackets is required by others prior to installation of this system. Generally an 8 inch wide blocking area at floor bracket locations, and a 5 inch wide blocking area at the walls is sufficient. This is to be determined and detailed by the builder.



<b>Alcuf International Inc.</b> Box 8375, Ottawa, Ontario, Canada K1G 3H8 <a href="http://www.alcuf.com">www.alcuf.com</a>		DRAWING: <b>Alcuf Railing Systems</b>	
DRAWN BY: Harvey Parisien	SCALE: none	DATE: July 12, 2017	DRAWING REF:
Notes:	Revision Ref: 1.5	<b>R1</b>	

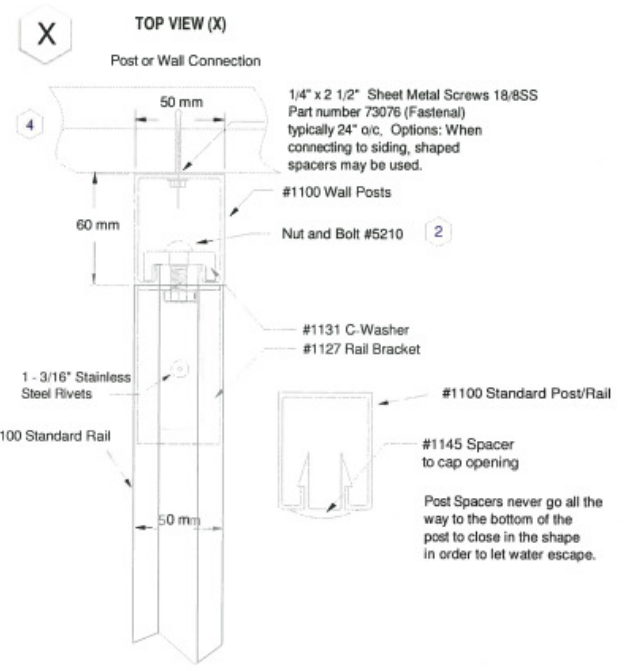
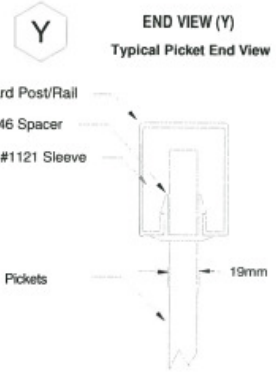
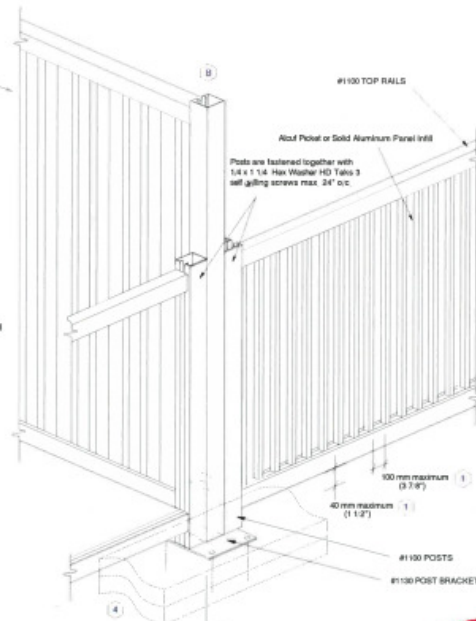
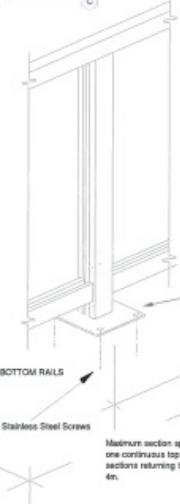
**DESIGN NOTES**

- Balcony Railing height, spacing under railing, and spacing between pickets to be in accordance with the Ontario Building code and local ordinances.
- All bolts will be grade 5 or better.
- Specifications that mention brand names can be substituted for other brands of equivalent or better quality.
- Sufficient backing under post brackets and behind wall brackets is required by others prior to installation of this system. Generally an 8 inch wide blocking area at floor bracket locations, and a 5 inch wide blocking area at the walls is sufficient. This is to be determined and detailed by the builder.



When the height is over 4 foot high this rail is the interlocking 18mm x 8\"/>

The top rail must be continuous between the wall sections and connect above and into the line post as shown.



<b>Alcuf International Inc.</b> Etc 8375 Ottawa Ontario Canada K1G 3H8 www.alcuf.com		DRAWING: <b>Alcuf Railing Systems</b>	
DRAWN BY: Harvey Parisien	SCALE: none	DATE: July 12, 2017	DRAWING REF:
Notes:		Revision Ref: 1.5	<b>R1</b>

**J.L. RICHARDS & ASSOCIATES**  
27628